

PictureStudio by AMBIR Premium Feature User Guide

Upgrade Picture Studio with premium features by activating a subscription. Bring black and white photos to life with AI colorization, revive blurry photos with AI Restore, automatically identify people with AI Face Matching, and fix damaged images with the Repair Tool.

Premium Features



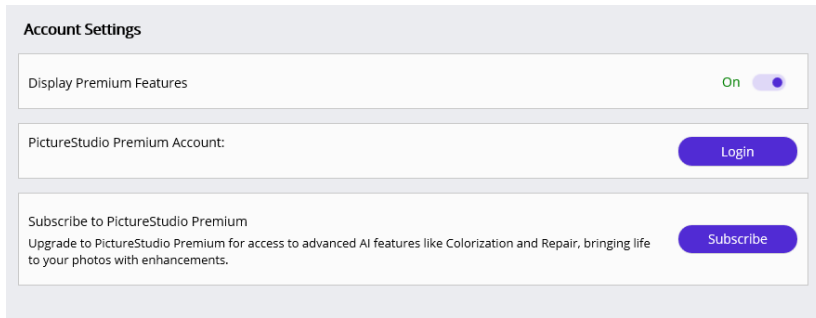
Table of Contents

- 1. How to activate your Picture Studio Subscription.....Page 2-3
- 2. PictureStudio Premium Features Guide.....Page 4-7
 - AI Colorization
 - AI Photo Restore
 - Repair Tool
 - AI FaceMatch
- 3. How to Cancel Your Premium SubscriptionPage 8-9

How to Activate Premium Features

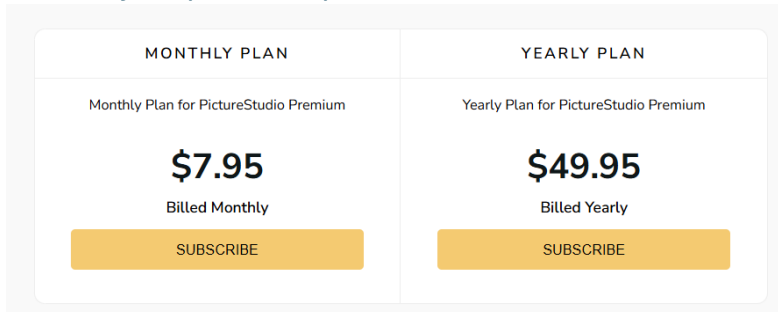
Step 1

Open Picture Studio and go to the settings page. Under Account Settings hit Subscribe to Picture Studio Premium.



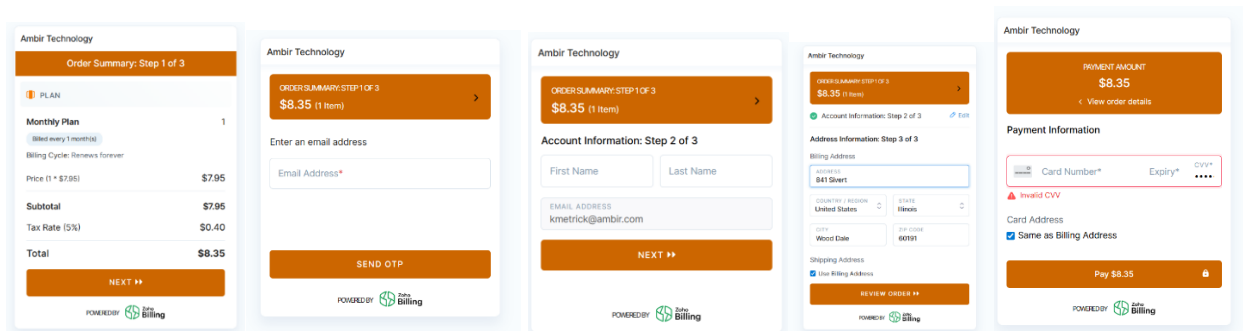
Step 2

Choose your preferred plan.



Step 3

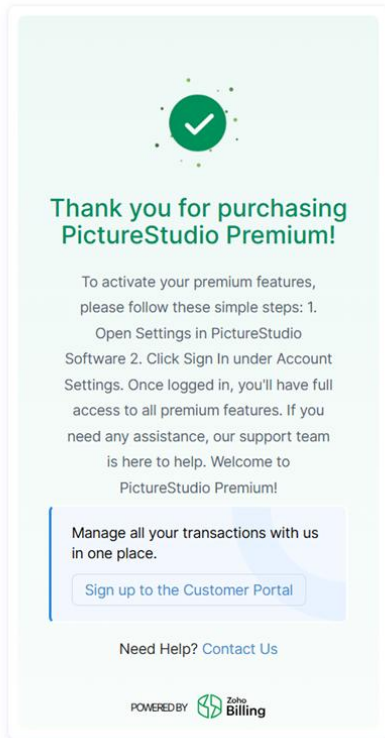
Follow the prompts to set-up your billing information.



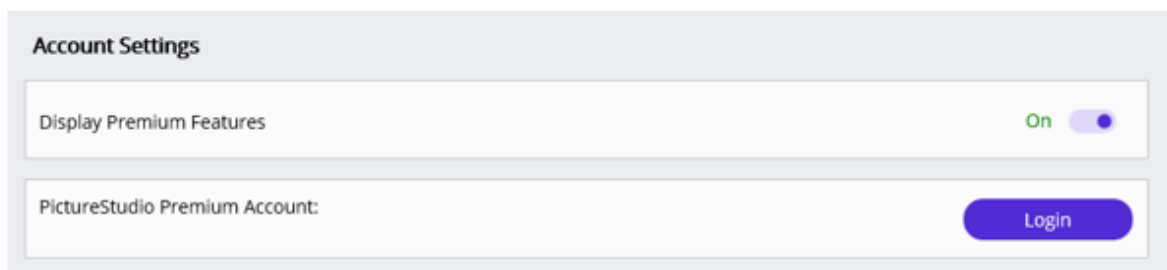
Step 4

You must activate your premium features in PictureStudio.

1. Create a password under “Sign up to the Customer Portal”



2. Go to Settings/Account Settings and hit Login to sign-in with your password.

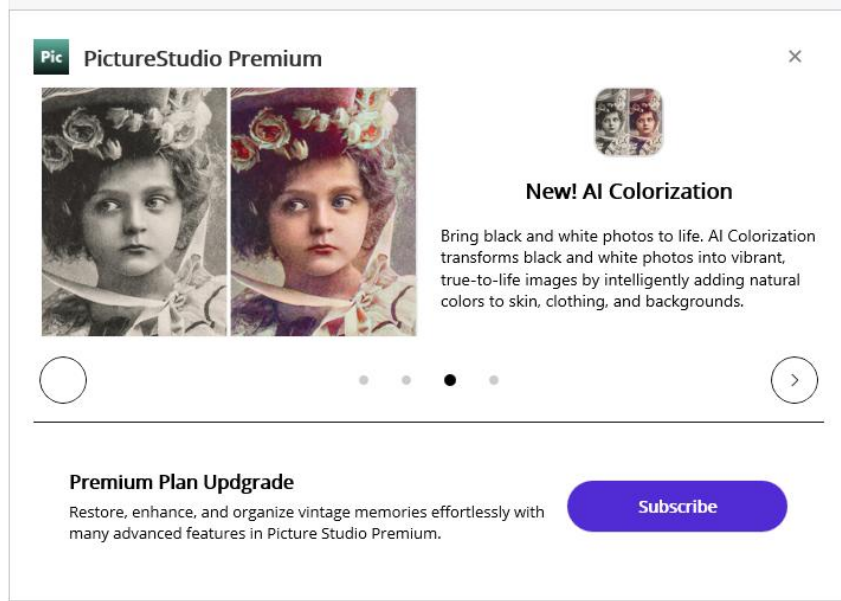


You can now enjoy using all of the advanced Premium Subscription features!

PictureStudio Premium Features

AI Colorization

AI Colorization uses advanced artificial intelligence to analyze tones and add natural, lifelike color to grayscale photos—revitalizing details with a realistic color palette.



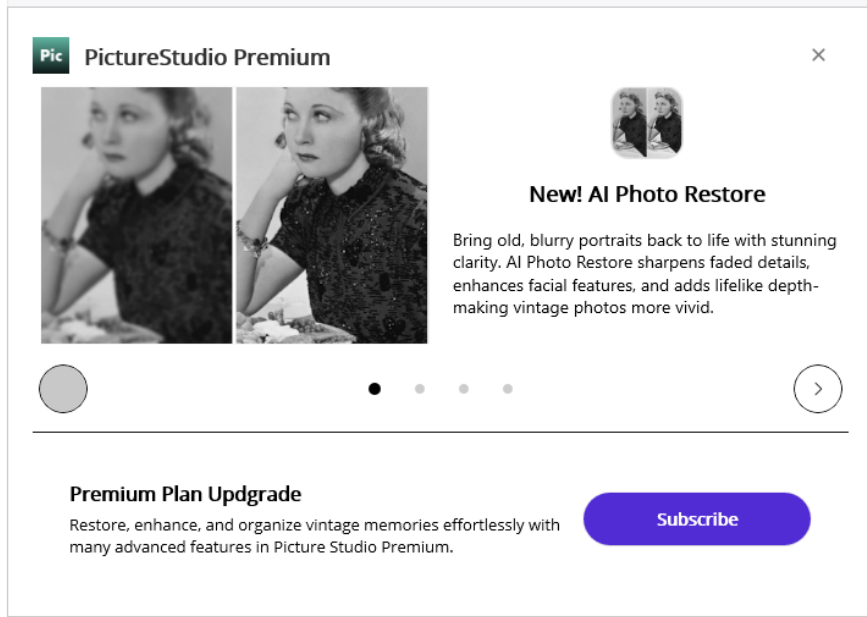
To colorize a photo:

1. Select the image you want to enhance.
2. Click the Colorization Tool icon.
3. (Optional) Select Duplicate the Original to automatically save a copy of the unedited photo.
4. Click Colorize to begin the colorization process.

Once complete, your newly colorized image will appear alongside the original, allowing you to compare results or continue editing

AI Photo Restore

AI Photo Restore brings old or blurry photos back to life with enhanced clarity and detail. This tool sharpens faded features, improves facial definition, and adds realistic depth—making vintage images appear more vivid and lifelike.



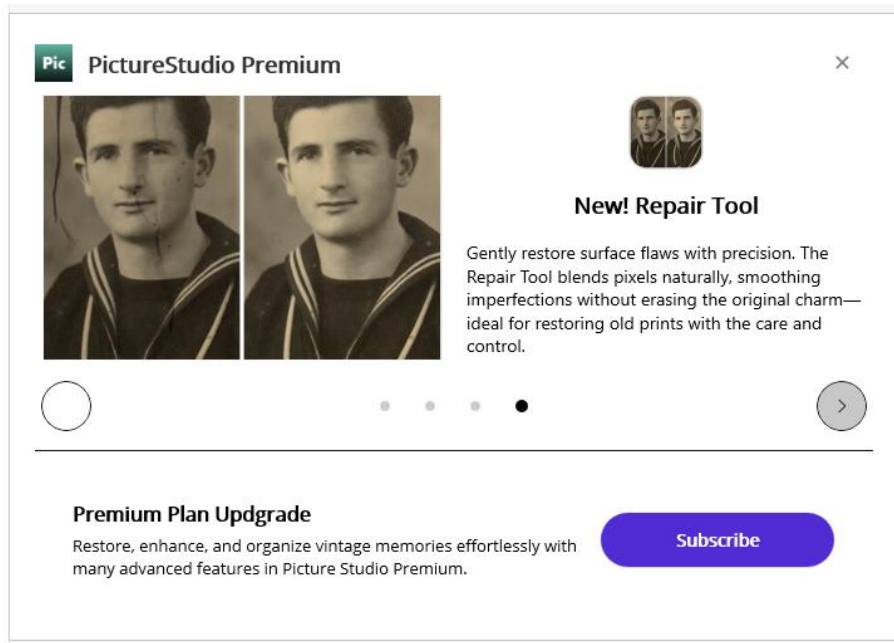
To restore a photo:

1. Select the image you want to enhance.
2. Click the AI Photo Restore Tool icon. The first time you use this tool, you'll be prompted to download supporting files. This process takes only a few seconds.
3. A settings panel will appear with three intensity modes: Low, Medium, and High. Choose your desired level and click Save.
4. Click Restore to begin the restoration process. The higher the intensity level, the longer the processing time.

Once restoration is complete, your enhanced photo will appear alongside the original, allowing you to review the results or make further adjustments.

Repair Tool

The **Repair Tool** blends pixels seamlessly to smooth imperfections while preserving the original character of your photo. It's ideal for restoring old prints, removing minor blemishes, or repairing scratches and marks.



To use the Repair Tool:

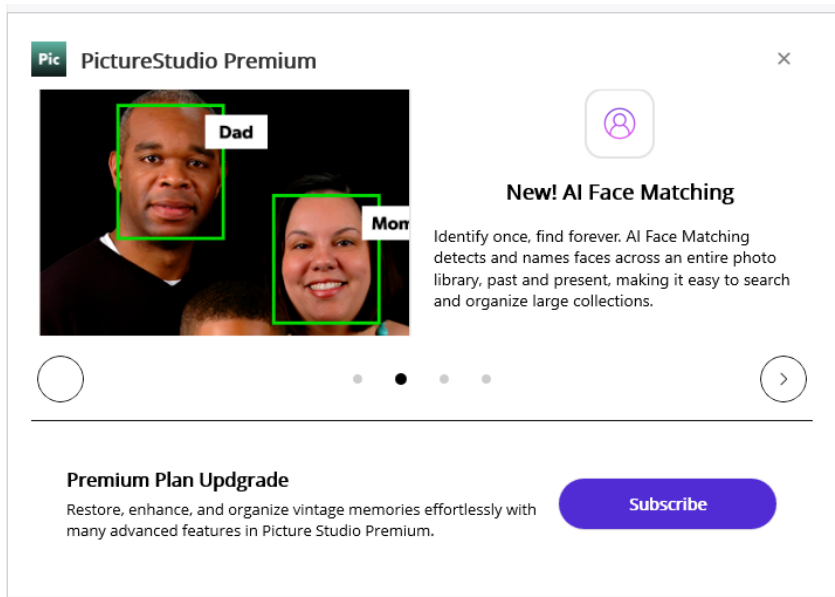
1. Select the image you wish to edit.
2. Click the **Repair Tool** icon.
3. A control panel will appear with a **slider** to adjust the brush thickness for precise control.
4. After setting your preferred size, **click and hold** while dragging the cursor over the areas you want to repair.
5. When you're satisfied with your edits, click **Save** at the top of the canvas to apply your changes.

Pro Tip: Use smaller brush sizes for fine details and larger brush sizes for broad or textured areas. Zoom in on the photo for greater accuracy when repairing delicate sections.

AI Face Matching



AI Face Match uses intelligent facial recognition technology to automatically detect and identify faces in your photos, helping you organize and search your image library quickly and efficiently. Once a face is named, the system can instantly recognize it across both new and existing photos.



To use AI Face Match:

1. Select an image to display on the canvas.
2. Click the **Face Match** icon located in the **Tool Bar** on the canvas.

Face Match Indicators:

Green Square – A green square around a face indicates a successful Face Match.

1. Right-click the green square to view the Face Match name.
2. If the match is incorrect, right-click again to:
 - Add the face to a different profile
 - Create a new profile name
 - Remove the face from Face Matching

Red Square – A red square indicates that no match has been found.

Right-click the red square to add the face to an existing profile or create a new one.

Face Match Profile Search

Quickly locate every photo associated with a Face Match profile.

1. Go to the **Search Photo** finder.
2. Type the **Face Match profile name** in the search bar.
3. All photos containing that identified face will instantly appear in the results.

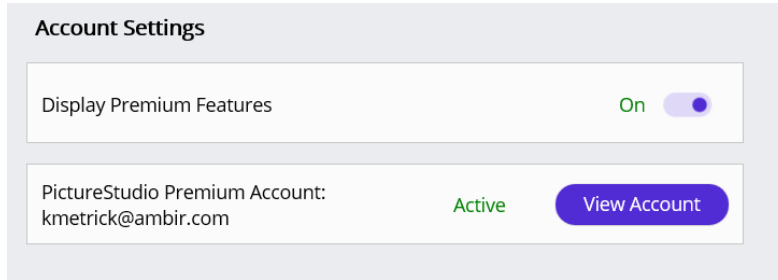
Face Match Information

Face Matches are also recorded on the image **Information Card** under the **People** section. This allows you to view, verify, or edit identified profiles directly from the image details.

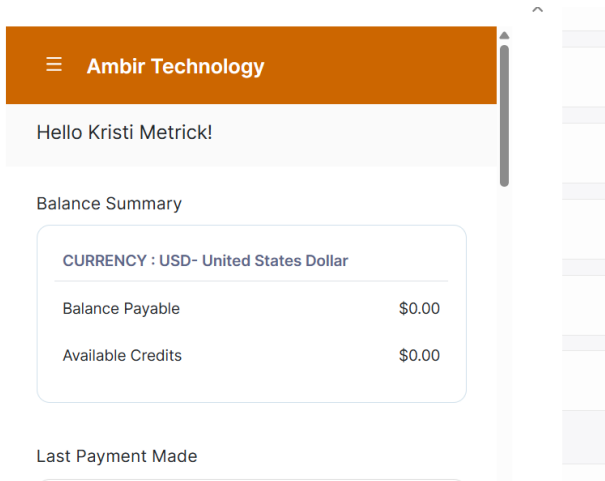
Tip: Use consistent naming for profiles to keep your photo library organized and make searching faster.

How to Cancel Your Picture Studio Premium Subscription

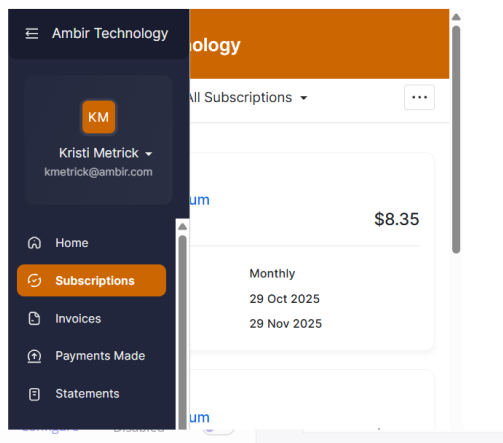
Step 1: Go to the Picture Studio Settings page and open View Account under the Account Settings section.



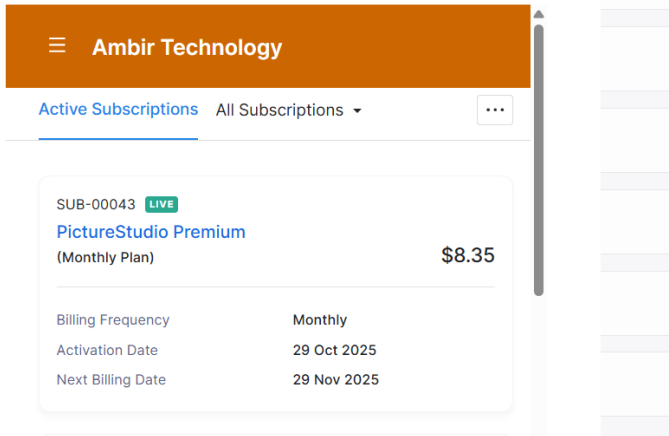
Step 2: On your account page - click on the hamburger menu (☰) in the upper left hand corner in the account header.



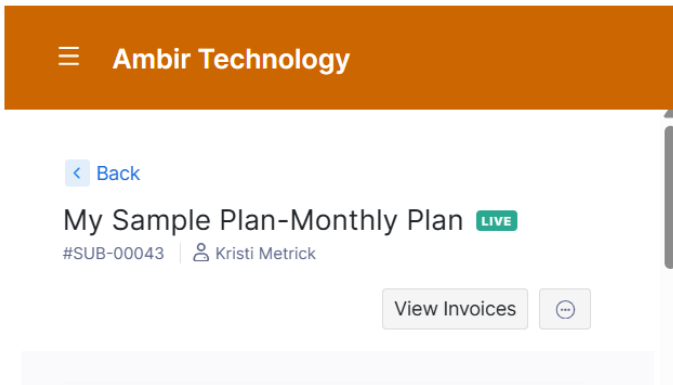
Step 3: Click on Subscriptions.



Step 4: Click on your Live “Picture Studio Premium” plan highlighted in blue.



Step 5: Click on the 3-dot circle button next to View Invoices



Step 6: Select Cancel Subscription from the drop-down menu. If you choose to cancel immediately before the billing cycle is complete – it will take up to 24 hours for the account to show as Inactive under your settings page.

